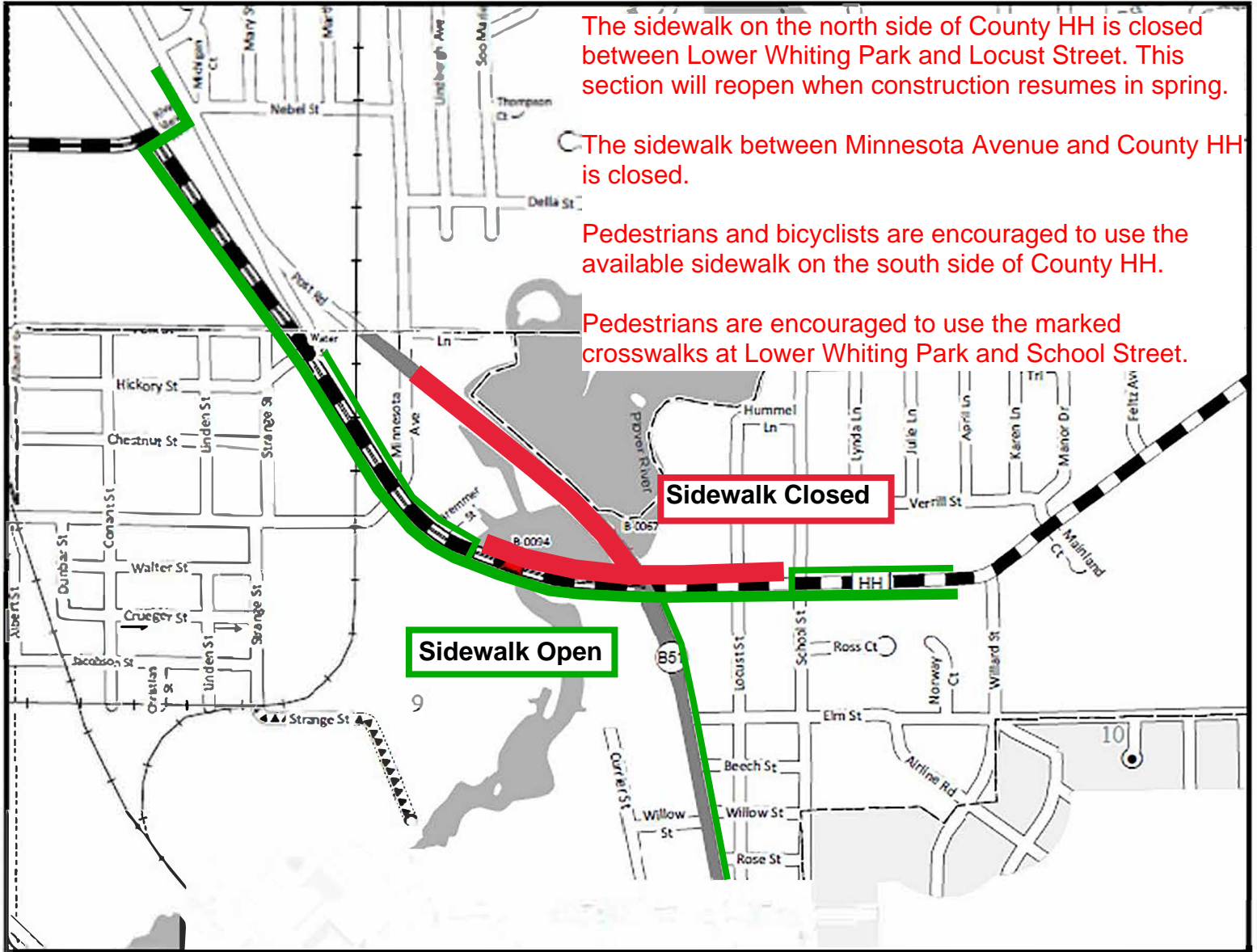


Business 51 Pedestrian Detour Route Winter 2018-19



The sidewalk on the north side of County HH is closed between Lower Whiting Park and Locust Street. This section will reopen when construction resumes in spring.

The sidewalk between Minnesota Avenue and County HH is closed.

Pedestrians and bicyclists are encouraged to use the available sidewalk on the south side of County HH.

Pedestrians are encouraged to use the marked crosswalks at Lower Whiting Park and School Street.